

GRANVILLE HARBOUR WIND FARM



Tasmania's newest wind farm is currently being built near Zeehan, on the West Coast of Tasmania.

The \$280 million, 112MW Granville Harbour Wind Farm will significantly increase the amount of clean energy available to Tasmanians and diversify the state's energy generation mix.

Granville Harbour Wind Farm will use 31 latest-technology turbines to generate enough electricity to power around 46,000 homes each year. That's almost every household in North West Tasmania.

Location

The wind farm site has been selected for its exceptional quality wind resources. When complete, Granville Harbour Wind Farm is expected to be one of the most productive and efficient wind farms in Australia.

Benefits to the region

Granville Harbour Wind Farm will deliver a significant boost to the local economy through investment in local suppliers, flow-on benefits to local businesses and new employment opportunities.

Construction

Construction of the wind farm is expected to be complete by mid 2020. Up to 200 employees will contribute to the delivery of this state-significant project. The wind farm will then operate for 30 years – with a team of 10 permanent employees needed to manage the site.

Safety

Safety is a daily consideration for our construction team given the scale and complexity of installing Tasmania's largest wind turbines. Careful planning is also going into the transport of oversize items to site via a 193-kilometre route from the Port of Burnie.

Benefits to the region



CONSTRUCTION EMPLOYMENT

125 jobs for Tasmanian workers



ECONOMIC INVESTMENT

\$3.8M investment in the West Coast

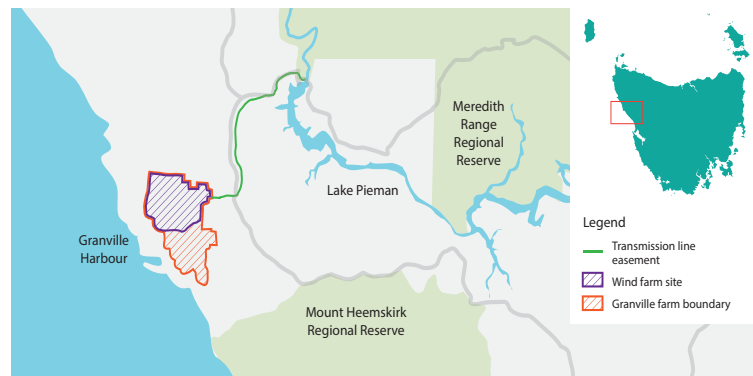
\$16M investment across Tasmania



EMPLOYMENT IN OPERATIONS


10 direct new jobs in the West Coast

19 indirect new jobs in Tasmania



 granvilleharbourwindfarm.com.au

 enquiries@granvilleharbourwindfarm.com.au

 0416 698 158

 @granvilleharbourwind