

Community Newsletter

Issue 1: December 2018



Artist impression of wind farm from Heemskirk Rd

Welcome to the first Community Update for the Granville Harbour Wind Farm project. We look forward to providing you with updates on this critical development for Tasmania's West Coast.



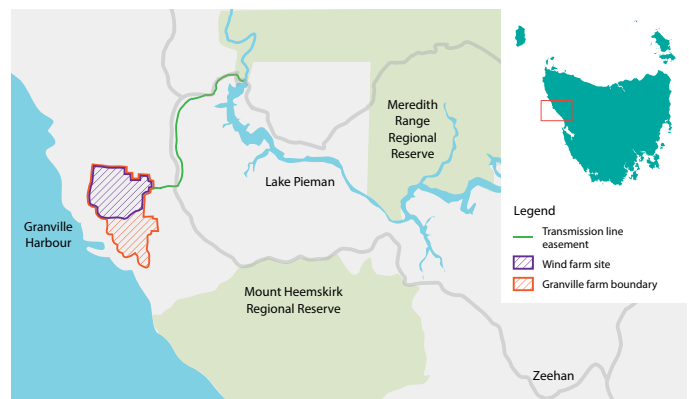
Project snapshot

Construction of Tasmania's newest windfarm is underway! For the past 12 months, we have been working to finalise detailed construction and environmental management plans for the 112 megawatt (MW) Granville Harbour Wind Farm project. These will ensure this \$280 million development is built with minimal impact to neighbours and the site's unique environment.

Helping Tasmania to 100% renewable power

While Granville Harbour Wind Farm is an important project for the West Coast, it will also contribute to the whole of Tasmania. When complete, the wind farm will produce 112 MW of clean energy, enough to power 46,000 homes – or nearly every household in the North West of Tasmania.

As a new, reliable source of clean energy, Granville Harbour Wind Farm will also help Tasmanians supply 100% of their energy requirements using zero emission renewable energy by 2022.



Engagement with our neighbours

Over the past few months, the project team has been meeting with our closest neighbours to share more details on how construction will be managed. Recently, we hosted a community drop in session and were delighted so many West Coast residents turned up to meet us! Stay tuned for more opportunities to meet with us or alternatively, visit our website for more information.

Local opportunities

As construction ramps up, contractors for this project, including Vestas, Lucas Total and RJE Global, are currently looking for qualified local workers to fill civil positions. There are also several opportunities for sub-contractors and suppliers for a range of goods and services. Available jobs and supply/contract opportunities will continue to be advertised via Construction Updates posted on local community noticeboards and on our website.

While the number of personnel onsite at present is relatively low, we expect numbers to increase in the New Year. It is intended most workers on this project will be based as close as possible to the project site. If you have experience in civil earthworks or electrical engineering, please visit our website and submit an Employment Enquiry Form.

Traffic planning

Transporting the large items required to build a 31-turbine wind farm poses a specific set of engineering and logistical challenges. The transportation of large items to site is expected to commence early next year.

A Transport Management Plan is currently being developed to reduce potential impacts to local road users where possible. Specific details of the transport of large items will be promoted via local newspapers and letter-box drops closer to the first deliveries being made.



Frequently asked questions

Will I be able to see the wind farm?

Wind turbines will be visible from points around the Granville Harbour area and Heemskirk Road. Visual impressions of what the wind farm will look like are available on our website.

How will the wind farm be connected to the grid?

A new 11-kilometre long electrical transmission line will be built parallel to an existing power distribution line along Heemskirk Road to the Reece Power Station where it will connect the wind farm to the grid.

Who is developing the project?

The wind farm is being developed, constructed and financed by Palisade Investment Partners on behalf of its investors – Australian Superannuation Funds and the Clean Energy Finance Corporation. Palisade is an Australian-based infrastructure specialist with experience in the development of clean energy projects.

Focus on health and safety

An important part of our project planning has been a strong focus on health and safety. Specific plans have now been drawn up to guide how we will respond in the case of an onsite occupational incident or an unplanned emergency – such as a bushfire.

We are incredibly grateful for the expert input and advice local emergency services – Fire, Ambulance, SES and Police, as well as Local Councils – have given us as we finalise our Emergency Plans. Our project team will continue to work with these key local groups as construction ramps up.

Stay in touch

Got a question? Like to know more?

Visit our website at:
www.granvilleharbourwindfarm.com.au

or email us at:
enquiries@granvilleharbourwindfarm.com.au

or call us on our community hotline:
0416 698 158.